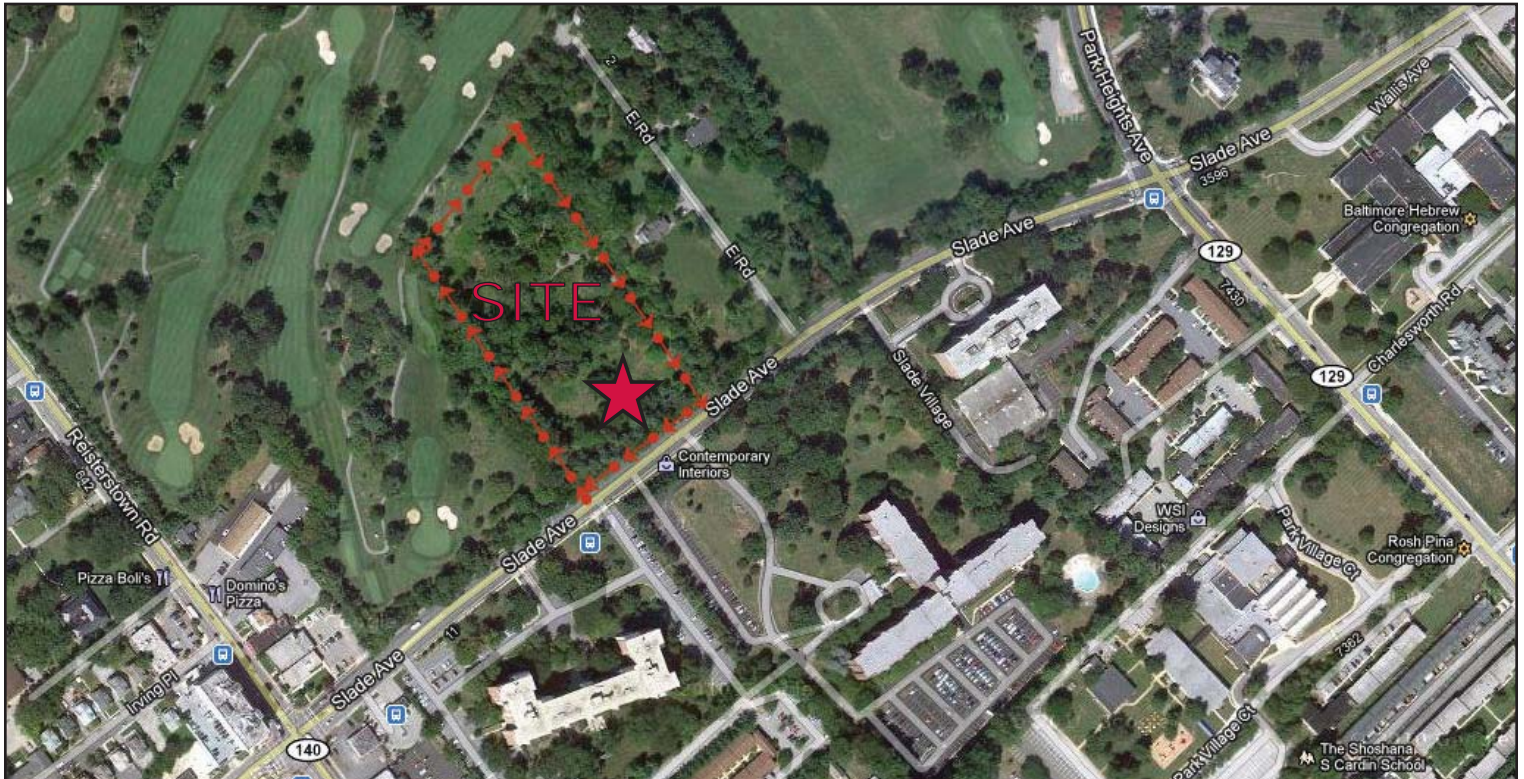


MULTI-FAMILY SITE FOR SALE

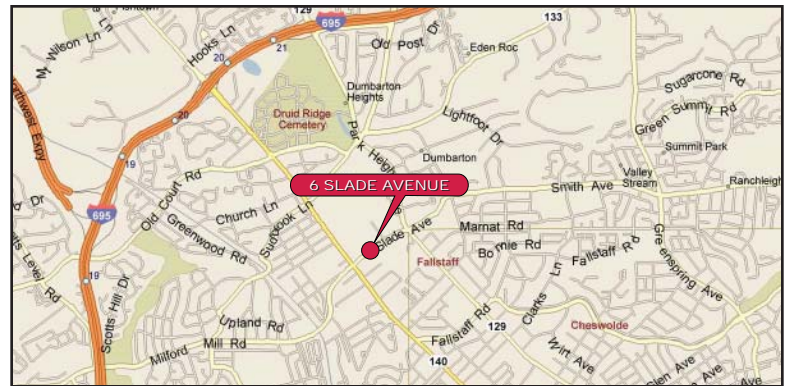
SIX SLADE AVENUE

5.98 Acres | Zoned DR 16

Pikesville, Baltimore County, MD 21208



- ❑ Ideal for town homes, apartments, condominiums, nursing home, assisted living, house of worship, or school. Approvals in place for 96 units.
- ❑ Zoned DR-16, allowing 16 units to the acre. Substantially more density could be obtained with PUD approval.
- ❑ Public utilities at site.



FOR ADDITIONAL INFORMATION
KLNb-LAND.COM

Contact Info:

Stephen J. Ferrandi
sferrandi@klnb.com
443.574.1430

6011 University Blvd
Suite 350
Ellicott City, MD 21043

NAI KLNb

Commercial Real Estate Services, Worldwide.
Global Solutions. Local Expertise.

While we have no reason to doubt the accuracy of any of the information supplied, we cannot, and do not, guarantee its accuracy. All information should be independently verified prior to a purchase or lease of the property. We are not responsible for errors, omissions, misuse, or misinterpretation of information contained herein & make no warranty of any kind, express or implied, with respect to the property or any other matters.